

Mass Spectrometry

A complete line of turn-key services

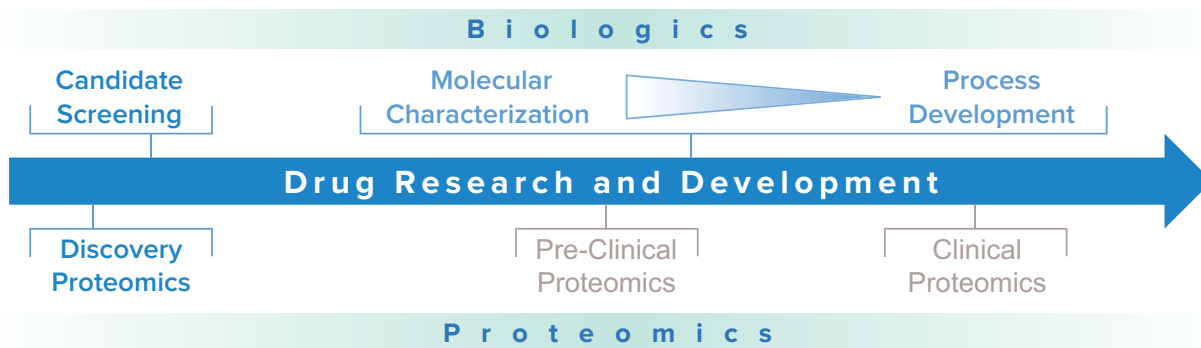
BGI now offers a complete line of mass spectrometry services for all your research and drug development needs. Our laboratory in San Jose, California is staffed by experienced scientists, equipped with high-resolution LC-MS instrumentation and advanced bioinformatics capabilities.

Simplifying the challenge of proteomic analysis and biologics characterization

Our advanced instrumentation and state-of-the-art methods can help simplify the challenge of proteomic analysis and biologics characterization. We provide services for quantitative proteomics, candidate ligand screening, and comprehensive characterization of biologics.

	Discovery Proteomics	Candidate Screening	Molecular Characterization	Process Development
Proteomics				
Protein Identification	●			
Proteome and PTM Profiling	●			
Quantitative Proteomics	●	●		
Biologics Characterization				
Higher Order Structure		●	●	
Intact Mass			●	●
Peptide Mapping			●	●
Product Purity			●	●

With you throughout the process



We offer scientific expertise to assist with experimental design, bioinformatics analysis, and longitudinal planning for complete solutions that will support drug development pipelines from discovery through process development.

BGI mass spectrometry services are provided by experts who specialize in proteomics and biologics characterization. Our focus on accuracy and service will ensure that your projects are completed correctly and on time.



Quality Data



Fast



Cost Effective

State of the art capability

Our laboratory employs innovative methods for achieving high data quality and high throughput for intact mass analysis, peptide mapping, and higher-order structure analyses.

Our mass spectrometry services can be used for characterization of your complex biologic drug, including bi-/multi-specific antibodies, antibody-drug conjugates, and Fc-fusion proteins.

Expert Analysis

- Bi-/multi-specific antibodies
- Antibody-drug conjugates
- Fc-fusion proteins



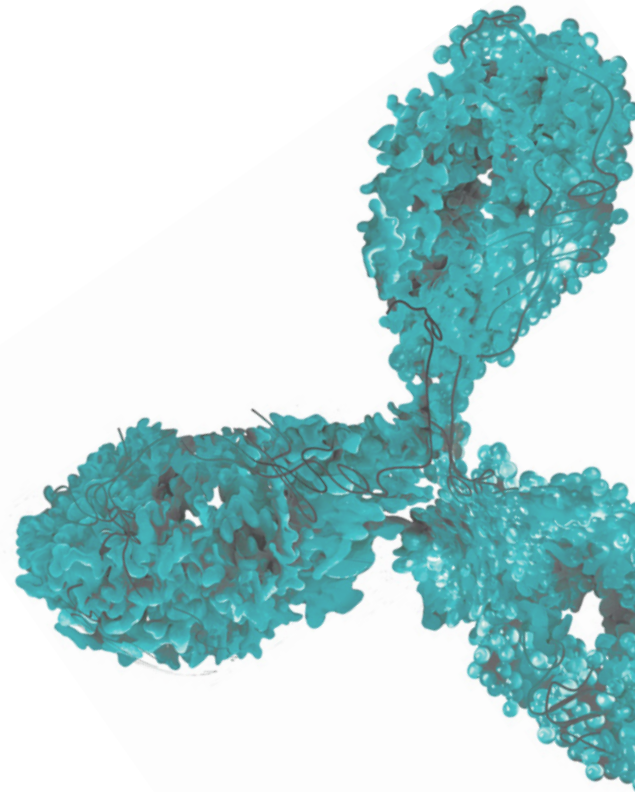
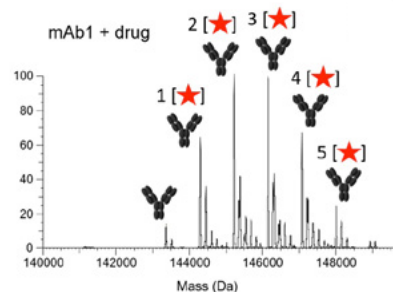
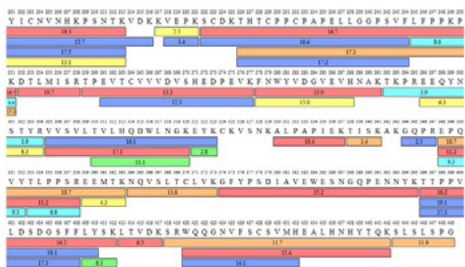
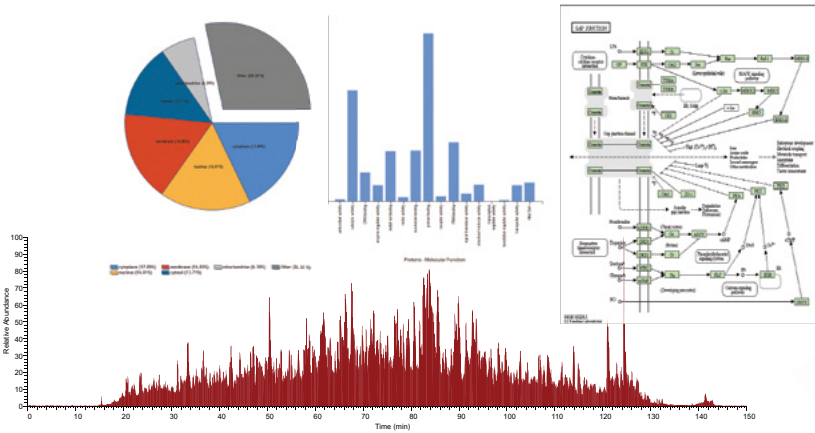
Confidence from working with the experts

As a recognized global leader in genomic research, BGI has for many years provided next generation sequencing services to pharmaceutical, biotech and academic research partners.

To complement the value of our NGS services we now offer proteomic and biologics characterization services to accelerate your life science research and drug development programs. Our portfolio of end-to-end LC-MS services leverages BGI's strengths in managing large scale computing infrastructure and pioneering innovative bioinformatics technologies.

Our mass spectrometry service laboratory in San Jose, CA is comprised of scientists with extensive experience in liquid chromatography and mass spectrometry-based analytical methods. This state-of-the-art facility is designed to support a broad range of biologic/protein characterization and proteomic research applications.

We have the flexibility to work with customers and provide customized MS workflows to meet unique project requirements.



To learn more

Start the dialog and learn how our Mass Spec services can benefit your research: for Technical Notes and comprehensive Service Overviews, visit www.bgi.com, write to us via info@bgi-international.com or contact your local BGI expert.



BGI Americas

One Broadway,
Cambridge, MA 02124,
USA
Tel: 617 500 2741

BGI Mass Spec Center

2904 Orchard Parkway
San Jose, CA 95134
USA

Copyright ©2019 BGI. The BGI logo is a trademark of BGI. All rights reserved. All brand and product names are trademarks or registered trademarks of their respective holders. Information, descriptions and specifications in this publication are subject to change without notice.

Published May 2019.

All Services and Solutions are for research use only.

P/N BGIAPG1 050919

We Sequence, You Discover

