



How to Use Ext2 and Ext3 for Windows System

Version 1.0

June 2011

Contents

1. Introduction	1
2. How to use	1
2.1 Download software	1
2.2 Installation.....	1
2.3 Use software	5

1. Introduction

Ext2fsd is a tool for accessing ext2 and ext3 file systems. It runs under all versions of Windows and can read almost any ext2 and ext3 file system. Please also read the release notes and the troubleshooting section. Windows is a trademark of Microsoft Corporation. Linux is a trademark of Linus Torvalds. All other trademarks and service marks are the property of their respective owners. This document describes how to use ext2 and ext3 format files for windows system.

2. How to use

2.1 Download software

Software name: ext2Fsd-0.50.exe

Address: <http://sourceforge.net/projects/ext2fsd/files/ext2fsd/0.50/>

Features Ext2Fsd supports:

- 1) Ext2/Ext3 volume reading & writing
- 2) Ext3 journal replay when mounting
- 3) Various codepage: utf8, cp936, cp950, etc
- 4) Mountpoint automatical assignment
- 5) Large inode size: 128, 256, etc
- 6) Large file size bigger than 4G
- 7) CIFS sharing over network
- 8) Htree directory indexing
- 9) Ext4 Extent read-only, no size truncating and expanding support
- 10) Fast fsck (uninit_bg) and group block checksum support
- 11) 64k block-size, support compatible to Linux Ext4 and e2fsprogs

12) OS: windows 2000, xp, vista, server 2003/2008 and win7

Features Ext2Fsd doesn't support:

- 1) Fully Ext3 journal support
- 2) Ext4 Extent support
- 3) LVM and Linux raid (md)
- 4) NT4 is no longer supported

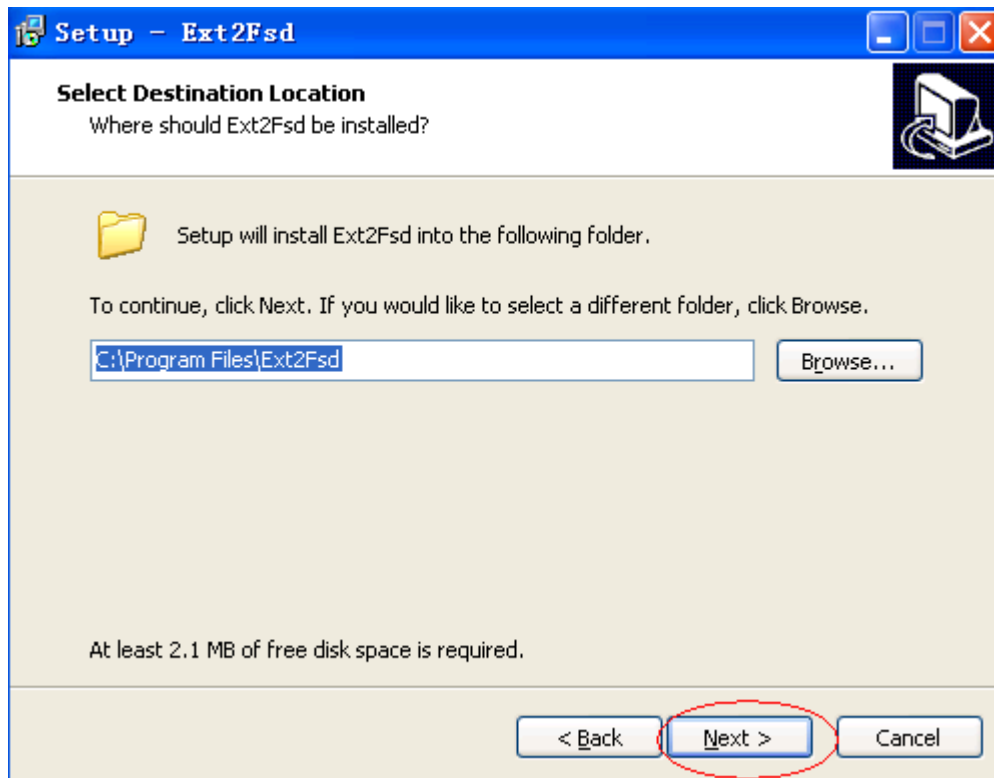
2.2 Installation

Installation needs six steps, please operate and finish according to the following prompt message.

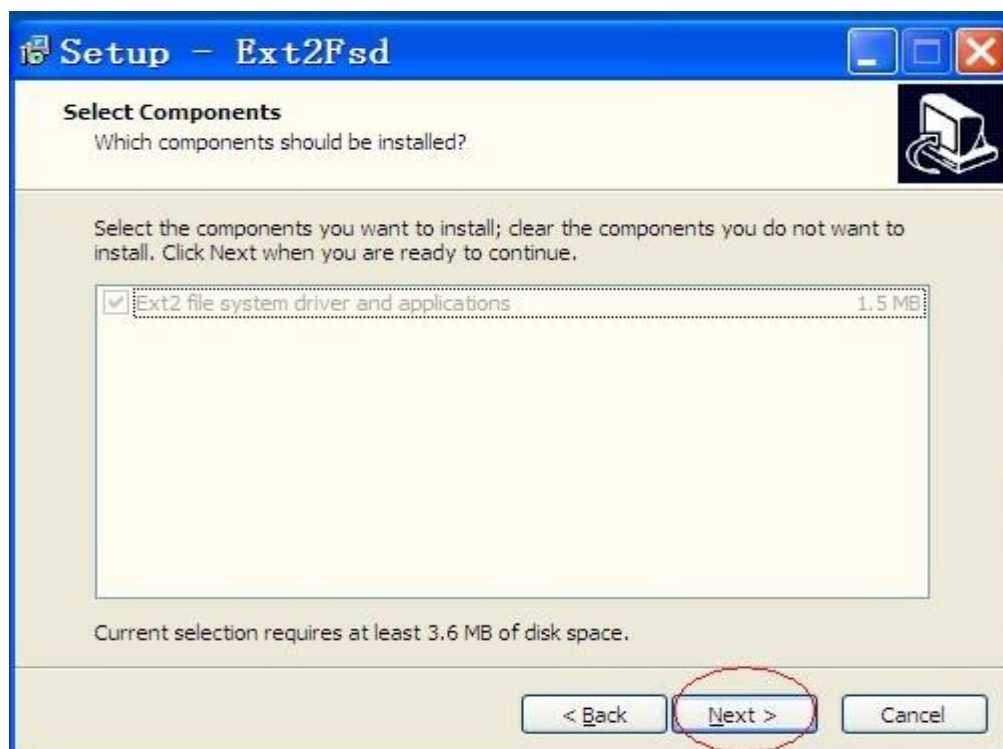
Step 1: Double-click to open ext2Fsd-0.50.exe, and then select "Next";



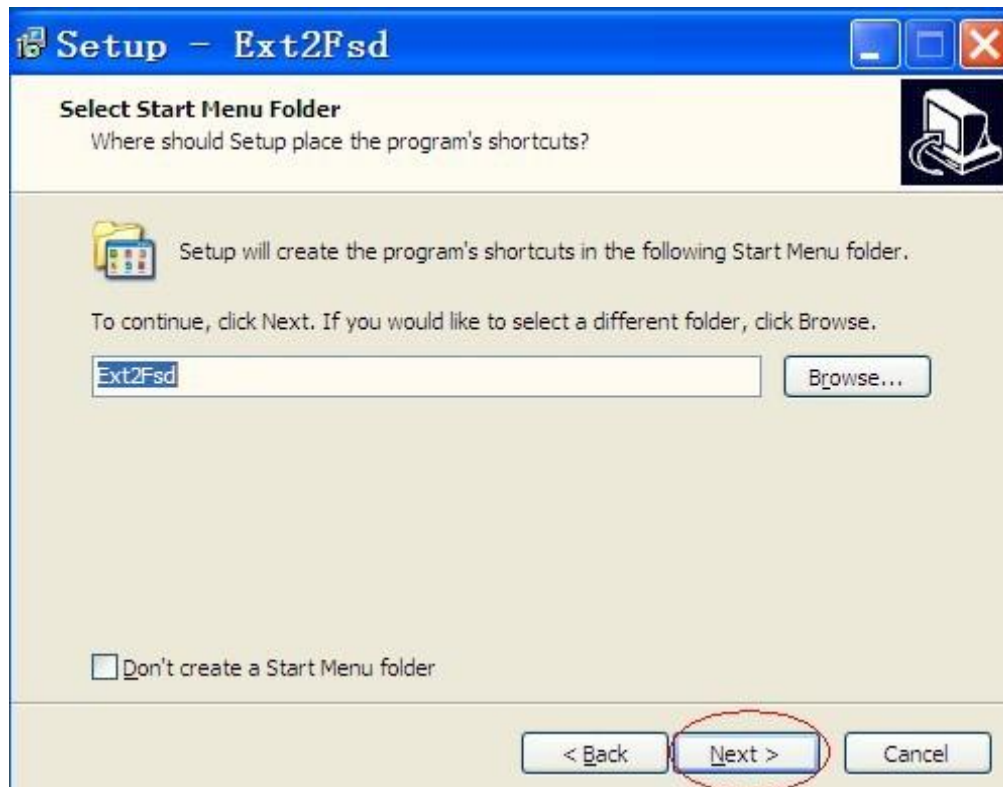
Step 2: Select a folder, and then "Next";



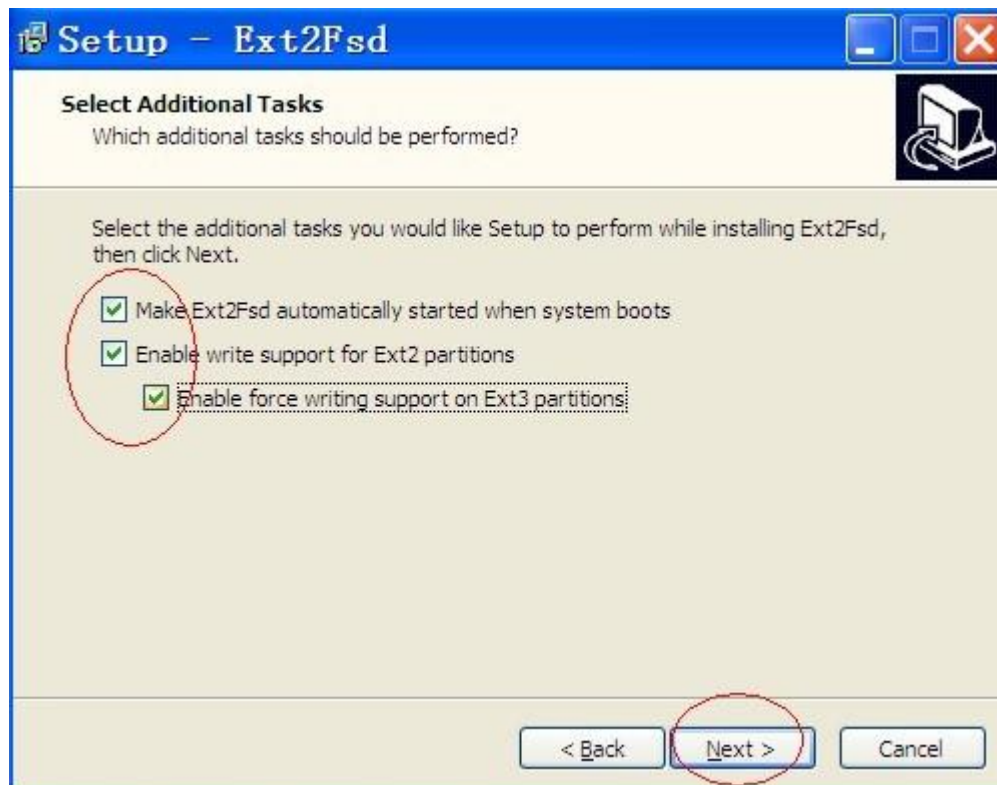
Step 3: Continue "Next";



Step 4: Select a folder and "Next";



Step 5: Tick all and "Next";

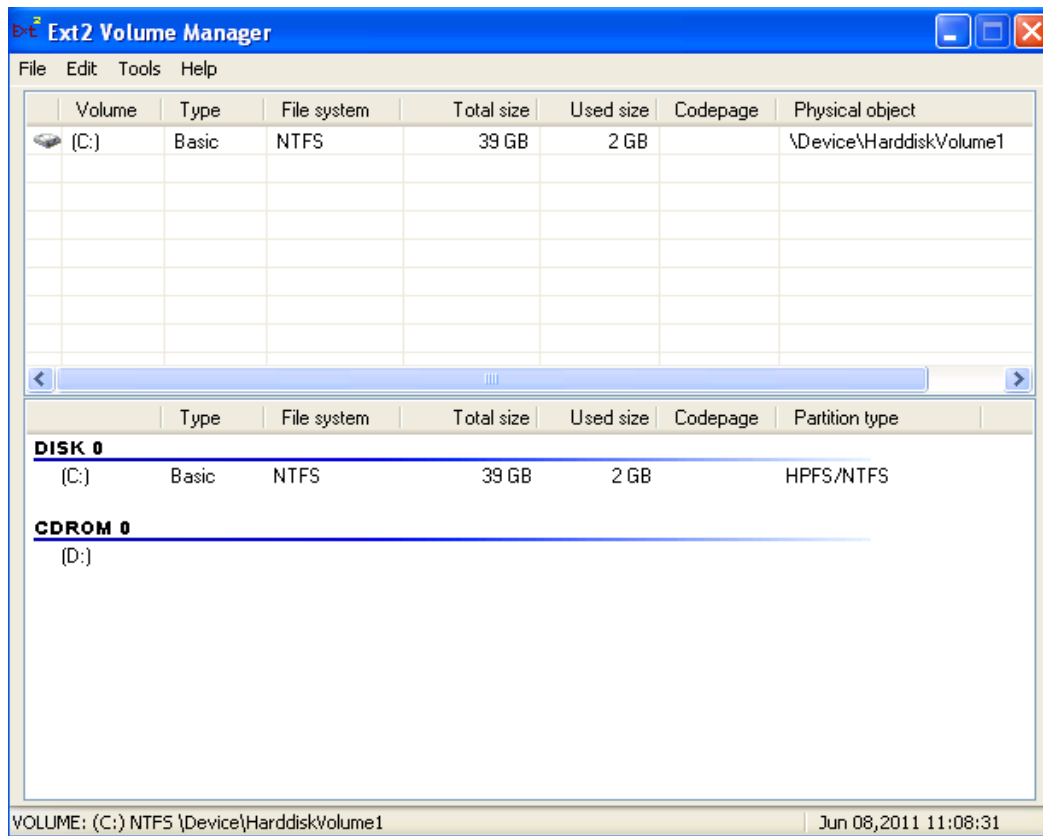


Step 6: Tick and Click "Finish".

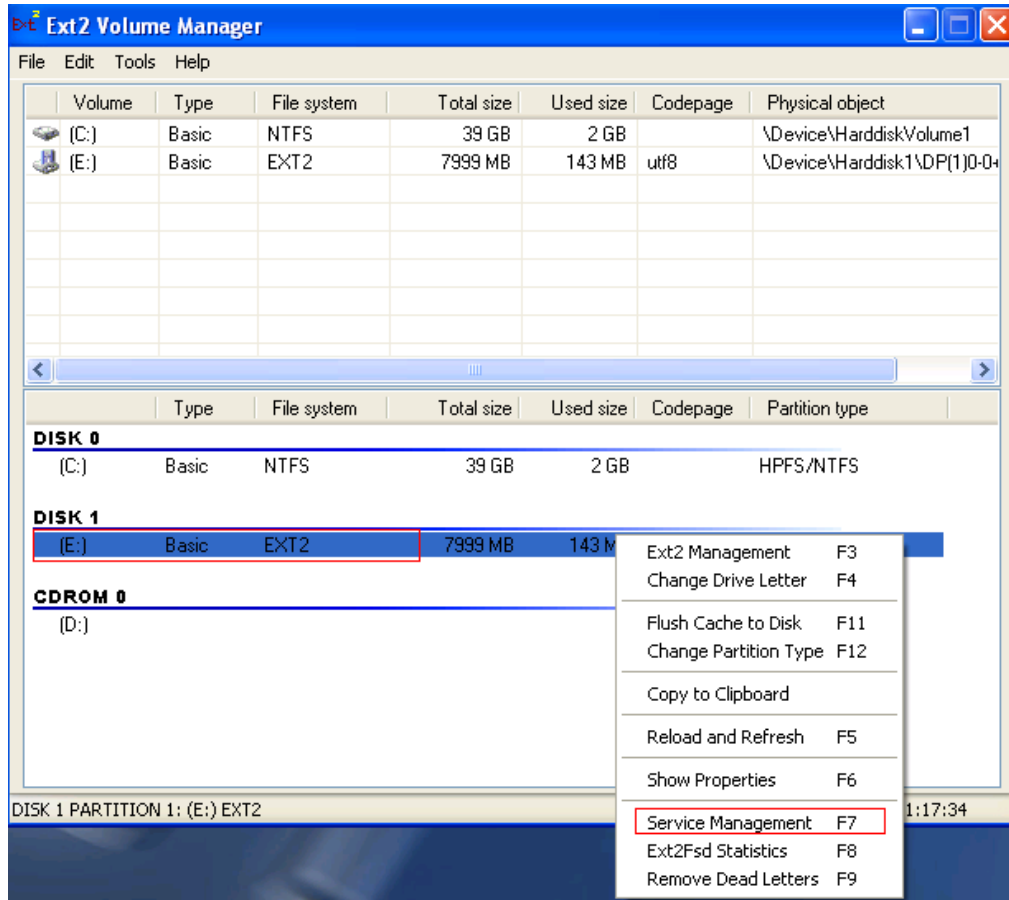


2.3 Use software

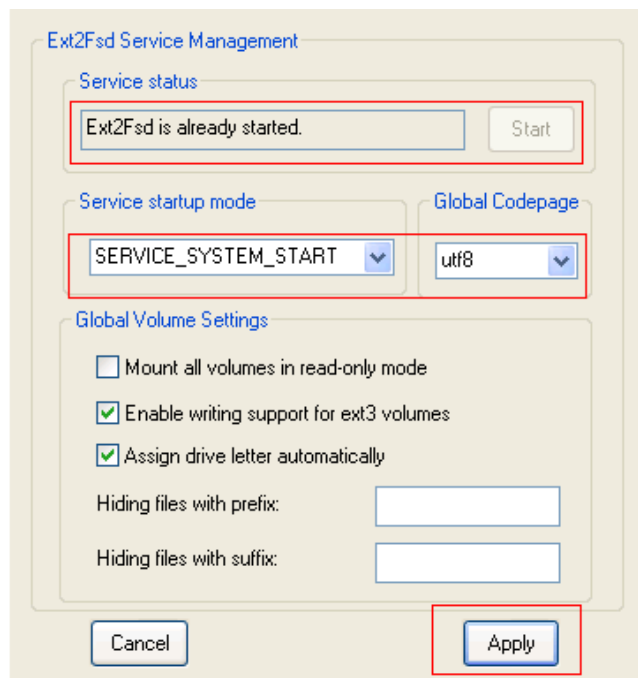
After starting the software, the interface will be shown as follows:



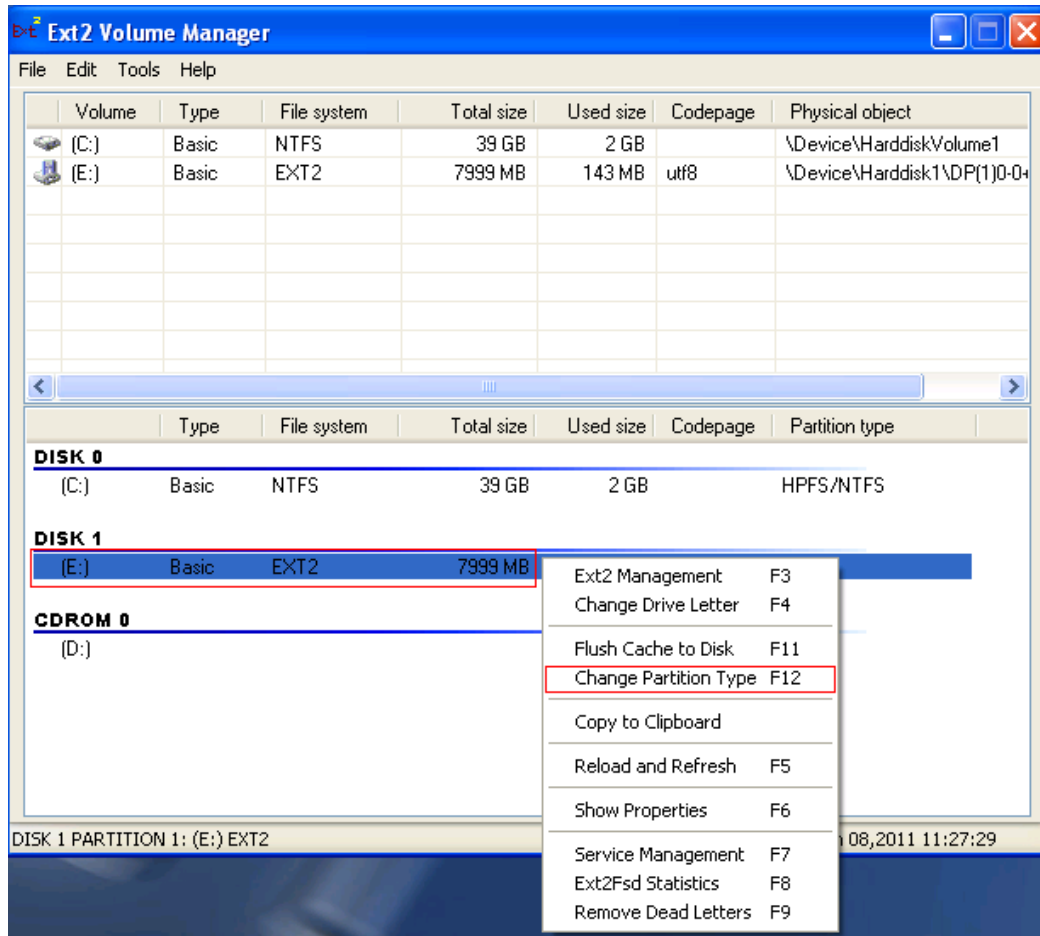
Insert the hard drive to your computer, then select the drive, for example (E:),
Right-click, select “Service Management”;



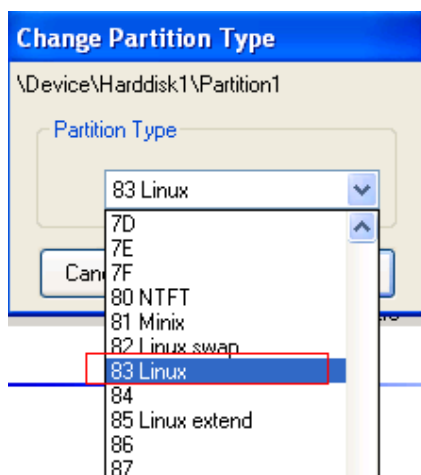
Then as follows, click “Start”, select “utf8”, click “Apply”;



Then select the drive, for example (E:), Right-click; select “Change Partition Type”;



As follows, select “83 Linux”, click “Change”, then double click “My computer”, and select the drive (for example, E:).



If you have any question about how to use ext2 and ext3, please contact our local salesman.